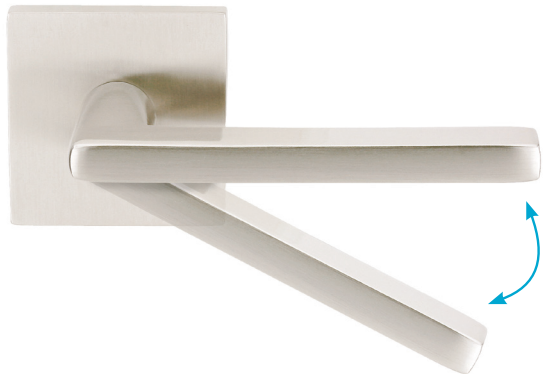


# 28° Latch

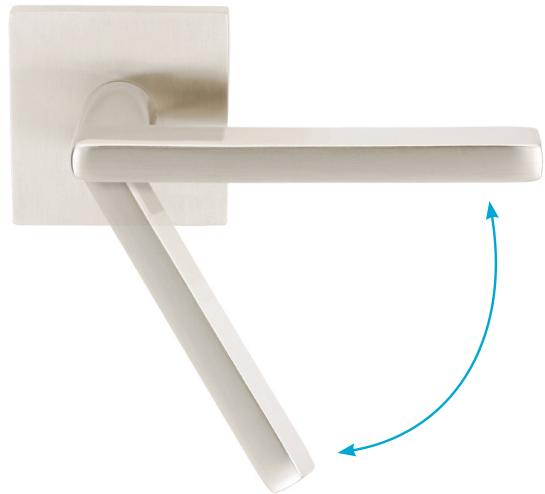
We are pleased to introduce our 28° latch as an optional upgrade to your order. These latches are available for all of our current brass, bronze, and wrought steel privacy, passage and handle sets.\* The 28° latches are an ergonomic alternative to standard latches, shortening the rotation required to turn the knob or lever.



**Lever operated with EMTEK 28° Latch**



**Lever operated with EMTEK Standard Latch**



**To order 28° Latch with any Knobset, Leverset or Handleset, add the below product code and price.**

Product Code		Add On List Price
Latch28	Add Finish and Backset (2 3/8" or 2 3/4")	<b>\$20.00</b>

*\*Knobsets, leversets and handlesets ordered with 28° latches are assembled with internal components specifically designed for use with our 28° latch.*

Addendum A 2010