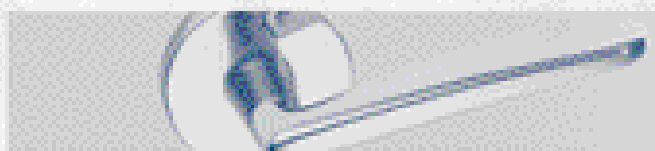
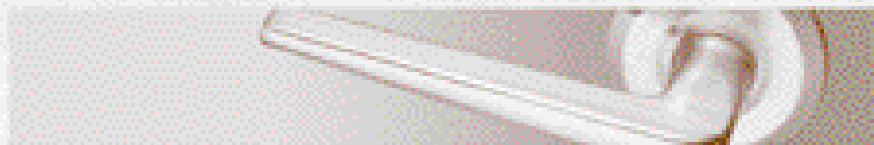


EMTEK®
ASSA ABLOY



An ASSA ABLOY Group brand

ASSA ABLOY

Stainless Steel Tubular Entrance Handleset



Zeus Style



Order any Stainless Steel lever or knob for the inside

- Standard 2¹/₈" Door Prep.
- 5¹/₂" center to center
- Schlage C Keyway
- Choose any Emtek Lever for the inside.
- Interconnect Device Available.

Description	Product Code
-------------	--------------

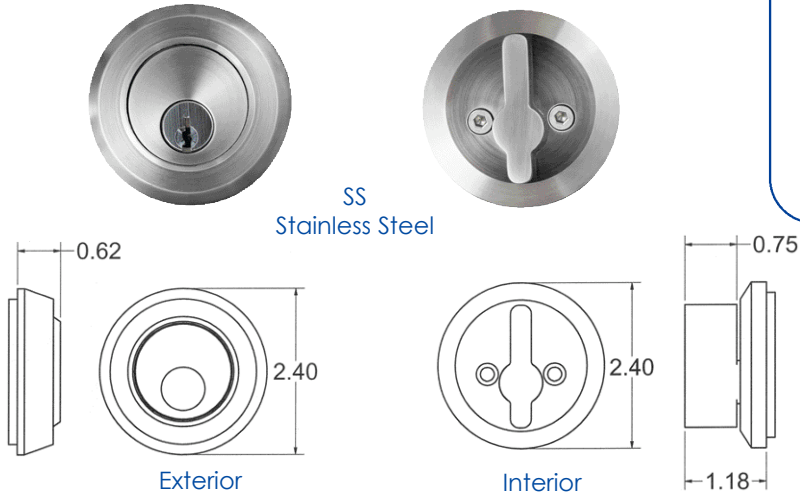
Single Cylinder	S40001	Specify Inside Stainless Steel Knob or Lever Style and Handing (LH/RH)
Double Cylinder	S40002	
Dummy	S40000	

Interconnect Device Available for this style	Product Code 443
--	----------------------------

Standard latch is 2³/₈" backset. Specify 2³/₄" backset if required.
Handing Required if lever used on inside, or if interconnect device is specified.

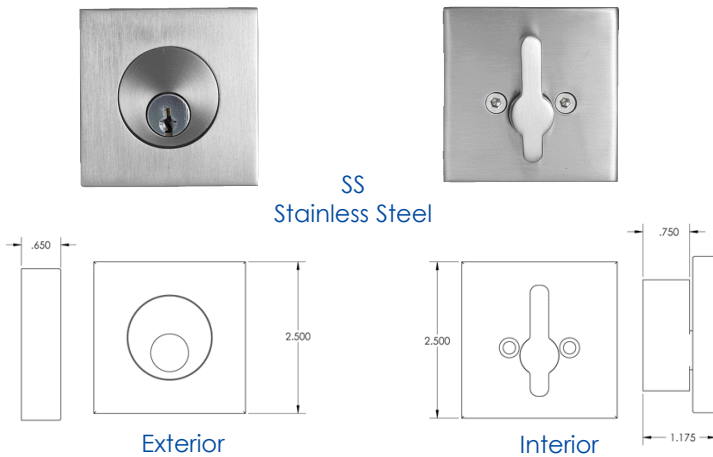
Deadbolts

Round Deadbolts



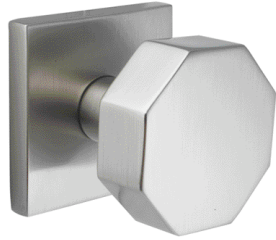
- Standard Door Prep & Installation.
- Schlage C Keyway.
- Solid Brass Cylinder.
- Hardened Steel Bolt.
- Heavy Gauge Understrike
- Standard Latch 2³/₈" Backset.
- Specify 2³/₄" Backset if required.

Square Deadbolts

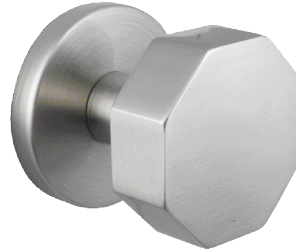


Description	Product Code	Finish
Round Deadbolt Single Cylinder	S50001	Brushed Stainless Steel (SS)
Square Deadbolt Single Cylinder	S50003	
Round Deadbolt Double Cylinder	S50002	Brushed Stainless Steel (SS)
Square Deadbolt Double Cylinder	S50023	

Cast Stainless Steel Knobsets



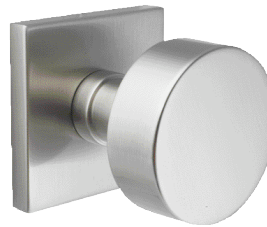
Octagon Knob
with Square Rosette



Octagon Knob
with Round Rosette

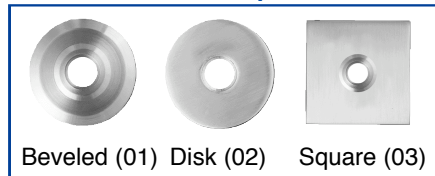


Round Knob
with Beveled Rosette



Round Knob
with Square Rosette

Rosette Option



Beveled (01) Disk (02) Square (03)

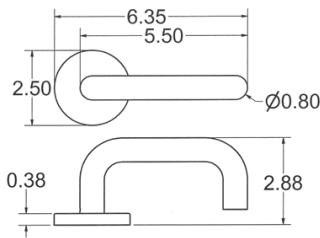
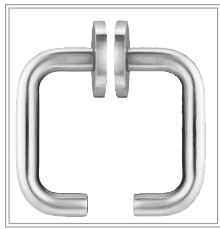
Description	Product Code	Rosette Style	Knob Options	Finish
Passage Set	S100	Beveled (01) Disk (02) Square (03)	Octagon Knob (OK) Round Knob (RK)	Brushed Stainless Steel (SS)
Privacy Set	S200			
Dummy, Pair	S300			

- Knobsets include Latches and Strike Plates.
- Standard Latch 2³/₈". Specify 2³/₄" if required.

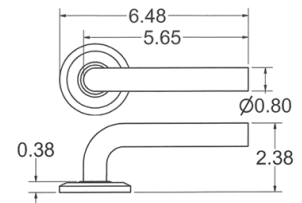
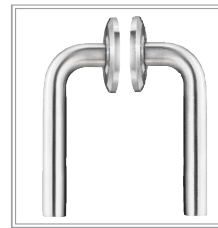
Tubular Stainless Steel Leversets



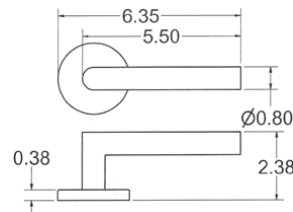
Cologne Lever Handle with Disk Rosette



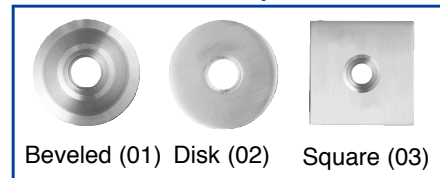
Kiel Lever Handle with Beveled Rosette



Stuttgart Lever Handle with Disk Rosette



Rosette Option



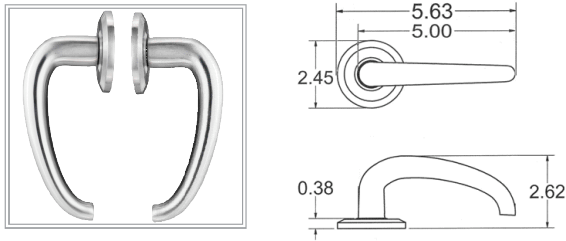
Description	Product Code	Rosette Style	Lever Style	Finish
Passage Set	S100	Beveled (01) Disk (02) Square (03)	Cologne (CO) Kiel (KL) Stuttgart (ST)	Brushed Stainless Steel (SS)
Privacy Set	S200			
Dummy, Pair	S300			

- Leversets include Latches and Strike Plates.
- Standard Latch 2³/₈". Specify 2³/₄" if required.
- Handing required for all lever sets.

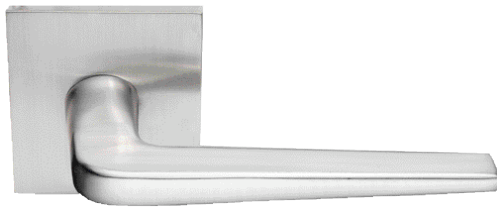
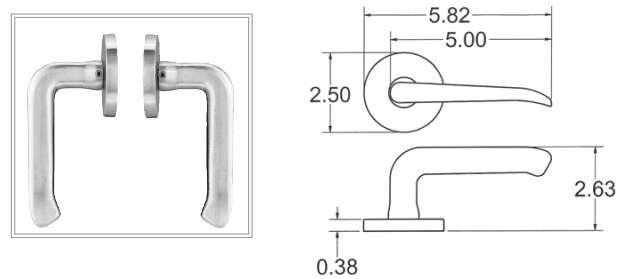
Cast Stainless Steel Leversets



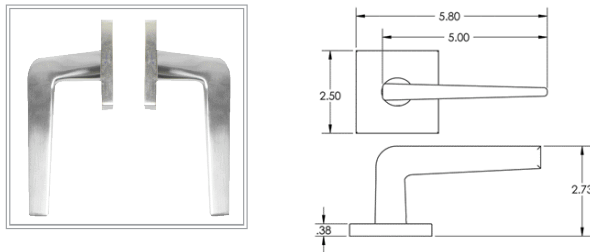
Achilles Lever Handle with Beveled Rosette



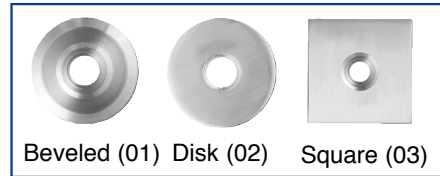
Ajax Lever Handle with Disk Rosette



Athena Lever Handle with Square Rosette



Rosette Option



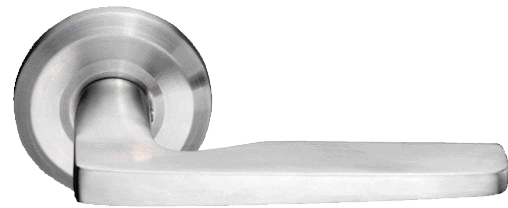
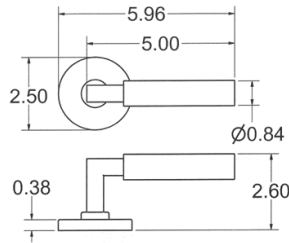
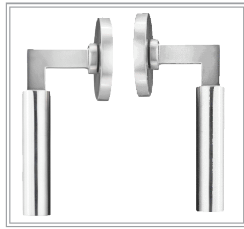
Description	Product Code	Rosette Style	Lever Style	Finish
Passage Set	S100	Beveled (01) Disk (02) Square (03)	Achilles (AC)	Brushed Stainless Steel (SS)
Privacy Set	S200		Ajax (AJ)	
Dummy, Pair	S300		Athena(AT)	
			Hercules (HS)	
			Hermes (HE) Poseidon (PO)	

- Leversets include Latches and Strike Plates.
- Standard Latch 2³/₈". Specify 2³/₄" if required.
- Handing required for all lever sets.

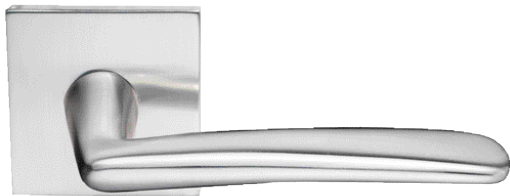
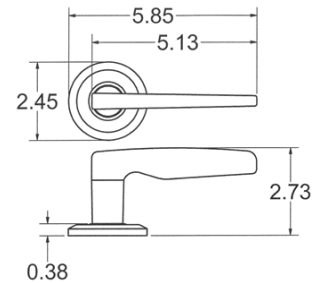
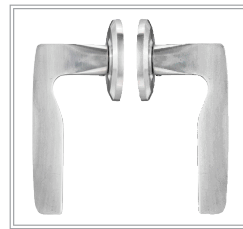
Cast Stainless Steel Leversets



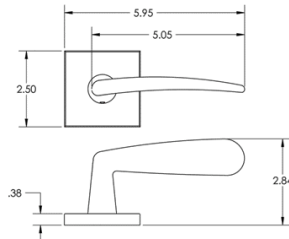
Hercules Lever Handle with Disk Rosette



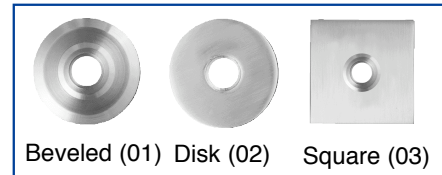
Hermes Lever Handle with Beveled Rosette



Poseidon Lever Handle with Square Rosette



Rosette Option



Description	Product Code	Rosette Style	Lever Style	Finish
Passage Set	S100	Beveled (01) Disk (02) Square (03)	Achilles (AC)	Brushed Stainless Steel (SS)
Privacy Set	S200		Ajax (AJ)	
Dummy, Pair	S300		Athena(AT)	
			Hercules (HS)	
			Hermes (HE)	
			Poseidon (PO)	

- Leversets include Latches and Strike Plates.
- Standard Latch 2³/₈". Specify 2³/₄" if required.
- Handing required for all lever sets.

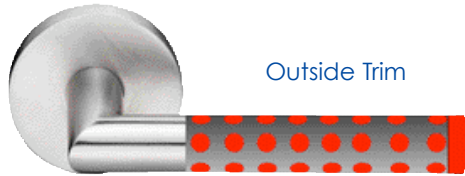
EMTEK PRODUCTS INC.

Phone No: (800) 356-2741 • (800) 428-4889 • (626) 961-0413 Fax No: (800) 577-5771 • (626) 336-2812

Brighthandle Lever Designs

BRIGHTHANDLE LEVER DESIGNS

BY EMTEK



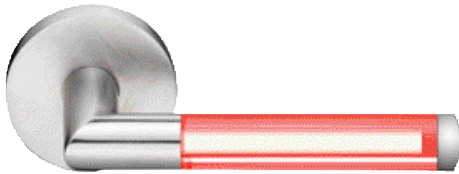
Outside Trim

Aurora Dot Lever

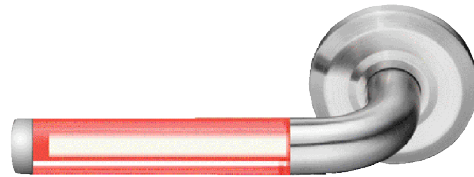


Outside Trim

Luna Dot Lever



Aurora Fuse Lever



Luna Fuse Lever



Inside Trim



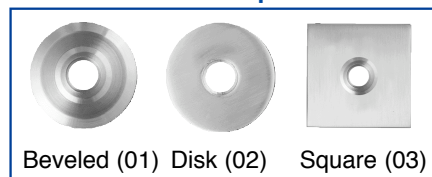
Inside Trim

PRIVACY FUNCTION

(These Levers illuminate when the door is locked)

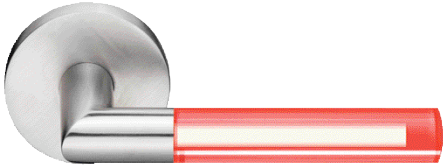
Description	Product Code	Rosette Style	Lever Style	Finish
Privacy Set	B100	Beveled (01) Disk (02) Square (03)	Aurora (AU) Aurora Dot (AUD) Aurora Fuse (AUF) Luna (LU) Luna Dot (LUD) Luna Fuse (LUF)	Brushed Stainless Steel (SS)

Rosette Option

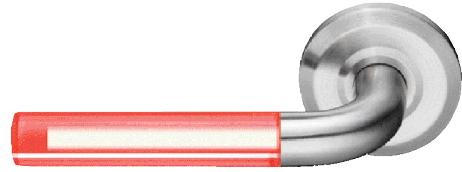


Beveled (01) Disk (02) Square (03)

Brighthandle Lever Designs



Aurora Lever



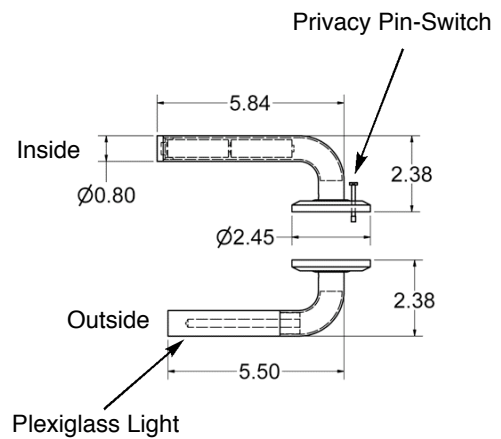
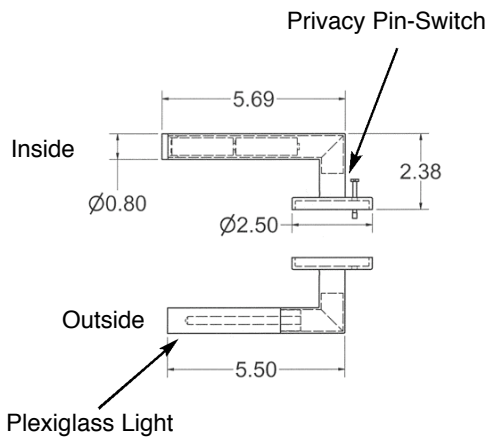
Luna Lever



Inside Trim



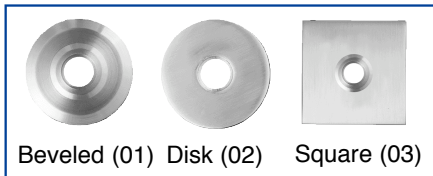
Inside Trim



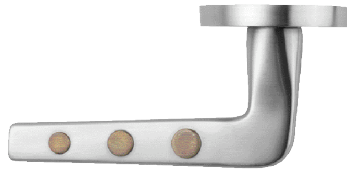
Description	Product Code	Rosette Style	Lever Style	Finish
-------------	--------------	---------------	-------------	--------

Privacy Set	B200	<ul style="list-style-type: none"> Beveled (01) Disk (02) Square (03) 	<ul style="list-style-type: none"> Aurora (AU) Aurora Dot (AUD) Aurora Fuse (AUF) Luna (LU) Luna Dot (LUD) Luna Fuse (LUF) 	Brushed Stainless Steel (SS)
-------------	------	--	--	------------------------------

Rosette Option



Natural Bronze Inlays Leversets



Bronze Round



Bronze Slotted

Description	Product Code	Rosette Style	Lever Style	Inlay Pattern
Passage Set	S100	Beveled (01) Disk (02) Square (03)	Athena(AT)	Bronze Round (BRR)
Privacy Set	S200			
Dummy, Pair	S300			Bronze Slotted (BRS)



Ebony Round



Ebony Slotted

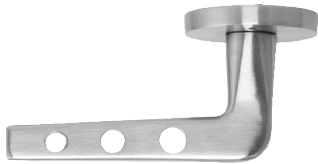


Mahogany Round

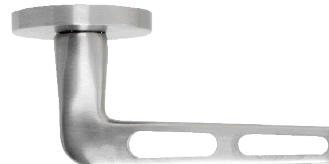


Mahogany Slotted

Description	Product Code	Rosette Style	Lever Style	Inlay Pattern
Passage Set	S100	Beveled (01) Disk (02) Square (03)	Athena(AT)	Ebony Round (EBR)
Privacy Set	S200			
Dummy, Pair	S300			Mahogany Round (MAR)
				Mahogany Slotted (MAS)



Meteor Lever



Comet Lever

Description	Product Code	Rosette Style	Lever Style	Finish
Passage Set	M100	Beveled (01) Disk (02) Square (03)	Comet (CT) Meteor (MT)	Brushed Stainless Steel (SS)
Privacy Set	M200			
Dummy, Pair	M300			

- Leversets include Latches and Strike Plates.
- Standard Latch 2³/₈". Specify 2³/₄" if required.
- Handing required for all lever sets.

Stainless Steel Drawer Pulls



Knob (T-Pull), 2"

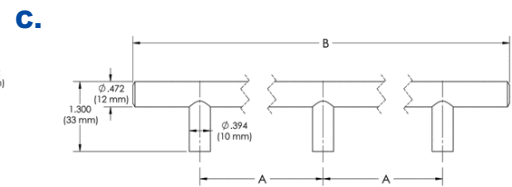
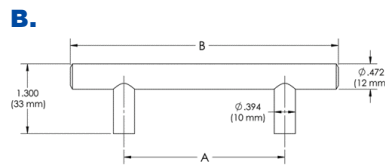
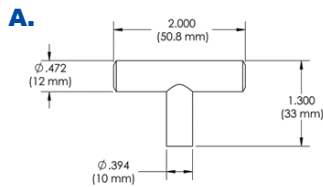


Pull with Two Legs, 3" thru 36"



Pull with Three Legs, 46" thru 54"

Specification Drawing



Description	Spec. Drawing	Product Code	Center to Center	Overall Length
Cabinet Knob	A	S62001SS		2"
Cabinet Pull, 3"	B	S62002SS	3"	5"
Cabinet Pull, 3 1/2"	B	S62003SS	3 1/2"	5 1/2"
Cabinet Pull, 4"	B	S62004SS	4"	6 1/2"
Cabinet Pull, 5"	B	S62005SS	5"	7 1/2"
Cabinet Pull, 6"	B	S62006SS	6"	8 1/2"
Cabinet Pull, 8"	B	S62007SS	8"	10 1/2"
Cabinet Pull, 10"	B	S62008SS	10"	12 1/2"
Cabinet Pull, 12"	B	S62009SS	12"	14 1/2"
Cabinet Pull, 16"	B	S62010SS	16"	18 1/2"
Cabinet Pull, 24"	B	S62011SS	24"	26 1/2"
Cabinet Pull, 28"	B	S62012SS	28"	30 1/2"
Cabinet Pull, 32"	B	S62013SS	32"	34 1/2"
Cabinet Pull, 36"	B	S62014SS	36"	38 1/2"
Cabinet Pull, 46"	C	S62015SS	46"	48 1/2"
Cabinet Pull, 54"	C	S62016SS	54"	56 1/2"

*Each pull packed with two sets of screws

Leather Drawer Pulls & Stainless Steel Cabinet Hardware



Brown Leather Pull, 5"

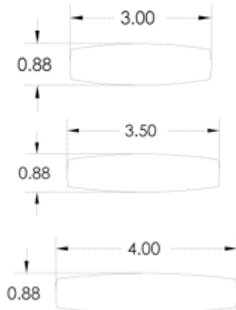


Black Leather Pull, 8 1/2"



Black Leather Pull, 14 1/2"

Description	Product Code	Overall Length
Cabinet Pull 3" C-to-C	S86521BLKST S86521BRNST	5"
Cabinet Pull 3 1/2" C-to-C	S86522BLKST S86522BRNST	5 1/2"
Cabinet Pull 4" C-to-C	S86523BLKST S86523BRNST	6 1/2"
Cabinet Pull 6" C-to-C	S86524BLKST S86524BRNST	8 1/2"
Cabinet Pull 8" C-to-C	S86525BLKST S86525BRNST	10 1/2"
Cabinet Pull 12" C-to-C	S86526BLKST S86526BRNST	14 1/2"



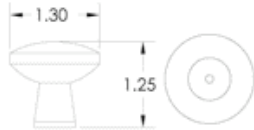
Delta Pull 3" — S60030SS

Delta Pull 3.5" — S60035SS

Delta Pull 4" — S60040SS



Dome Knob — S61113SS



Mushroom Knob — S61213SS



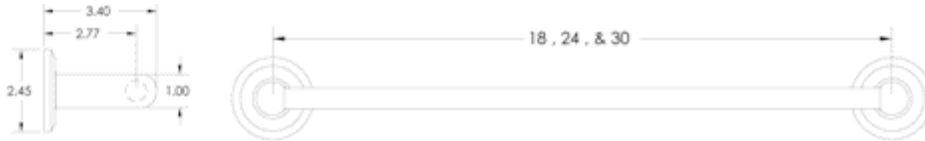
EMTEK PRODUCTS INC.

Phone No: (800) 356-2741 • (800) 428-4889 • (626) 961-0413 Fax No: (800) 577-5771 • (626) 336-2812

Stainless Steel Bathroom Hardware



Towel Bar—available in 18", 24" & 30" lengths

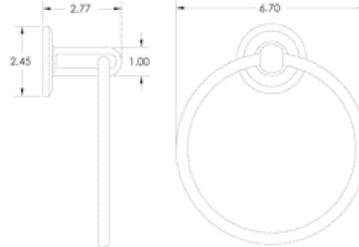


Description	Product Code	Rosette Style
-------------	--------------	---------------

Towel Bar 18"	S7010SS	Beveled (01) Disk (02) Square (03)
Towel Bar 24"	S7020SS	
Towel Bar 30"	S7030SS	



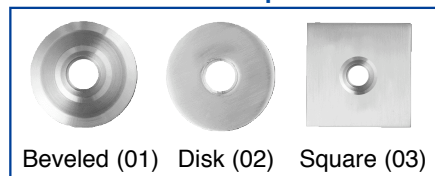
Towel Ring



Description	Product Code	Rosette Style
-------------	--------------	---------------

Towel Ring	S7300SS	Beveled (01) Disk (02) Square (03)
------------	---------	--

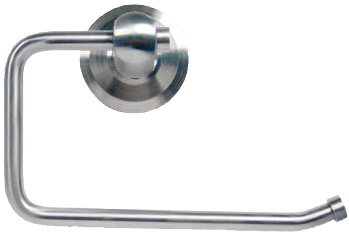
Rosette Option



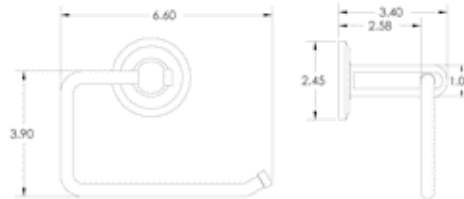
EMTEK PRODUCTS INC.

Phone No: (800) 356-2741 • (800) 428-4889 • (626) 961-0413 Fax No: (800) 577-5771 • (626) 336-2812

Stainless Steel Bathroom Hardware



Bar Style Paper Holder



Description	Product Code	Rosette Style
-------------	--------------	---------------

Bar Style Paper Holder — S7210SS

Beveled (01)
Disk (02)
Square (03)



Spring Rod Style Paper Holder



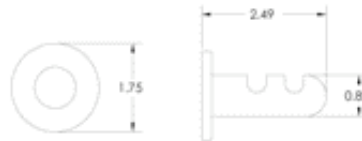
Description	Product Code	Rosette Style
-------------	--------------	---------------

Spring Rod Paper Holder — S7220SS

Beveled (01)
Disk (02)
Square (03)



Robe Hook



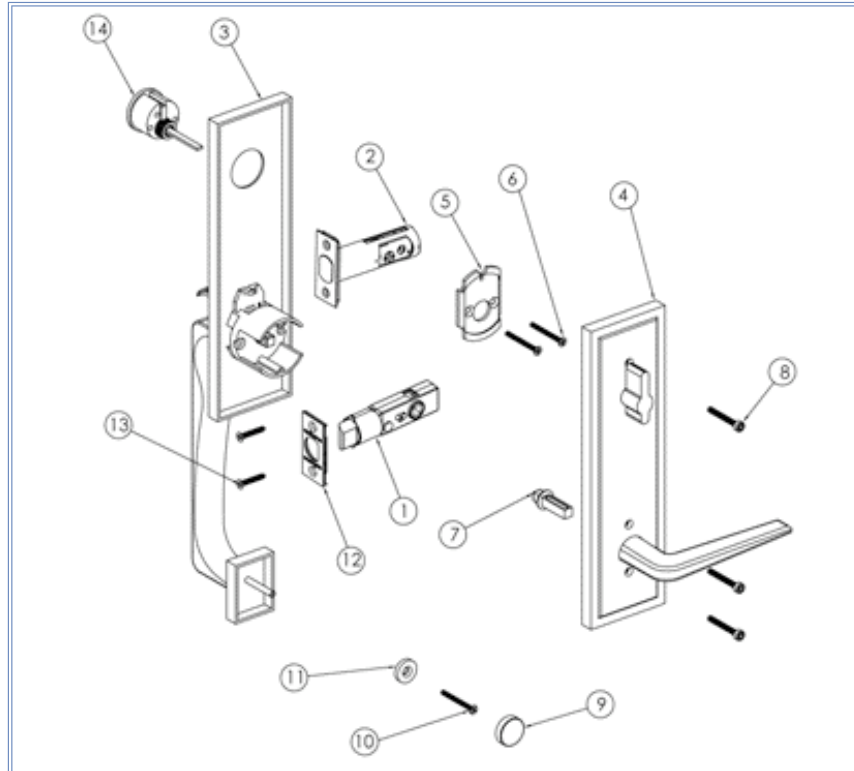
Description	Product Code
-------------	--------------

Robe Hook with Disk Rosette — S7100SS

Entryset Specifications

Door Prep Specifications:

- Fits standard door prep-- $2\frac{1}{8}$ " face bore & 1" edge bore.
- Fits a range of door thickness from $1\frac{3}{8}$ " to 2". Thicker doors--please specify.
- $5\frac{1}{2}$ " Center to Center spacing.



Latches:

Passage:

- 28° retraction
- 7MM hub
- Split spindles
- $2\frac{3}{8}$ " backset standard
- $2\frac{3}{4}$ " backset available--please specify
- Stainless steel nosebolt

Deadbolt:

- Hardened Steel Bolt
- $2\frac{3}{8}$ " backset standard
- $2\frac{3}{4}$ " backset available--please specify

Strike & Face Plates:

- Full Lip strike is standard (passage function)
- "T" strike optional--please specify (passage function)
- Strike & faceplates are square cornered
- Passage: Strike Plate-- $1\frac{1}{2}$ "W x $2\frac{1}{4}$ "H, Deadbolt: $1\frac{1}{8}$ "W x $2\frac{3}{4}$ "H (understrike supplied)
- Passage: Face Plate--1"W x $2\frac{1}{4}$ "H, Deadbolt: 1 "W x $2\frac{1}{4}$ "H (attached to latch)
- See page 17 for detailed diagram

Legend

- 1) Passage Latch
- 2) Deadbolt Latch
- 3) Outside Handle Plate
- 4) Inside Plate
- 5) Deadbolt Mounting Plate
- 6) Deadbolt Machine Screws
- 7) Inside Spindle
- 8) Inside Plate Machine Screws
- 9) Decorative Cap
- 10) Handle Grip Machine Screw
- 11) Designer Washer
- 12) Latch Face Plate
- 13) Latch Wood Screws
- 14) Deadbolt Cylinder

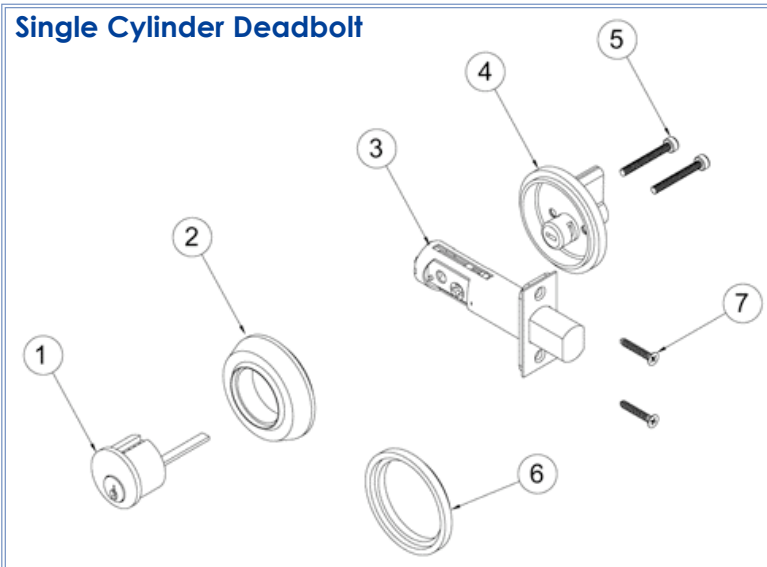
EMTEK PRODUCTS INC.

Phone No: (800) 356-2741 • (800) 428-4889 • (626) 961-0413 Fax No: (800) 577-5771 • (626) 336-2812

Deadbolts Specifications

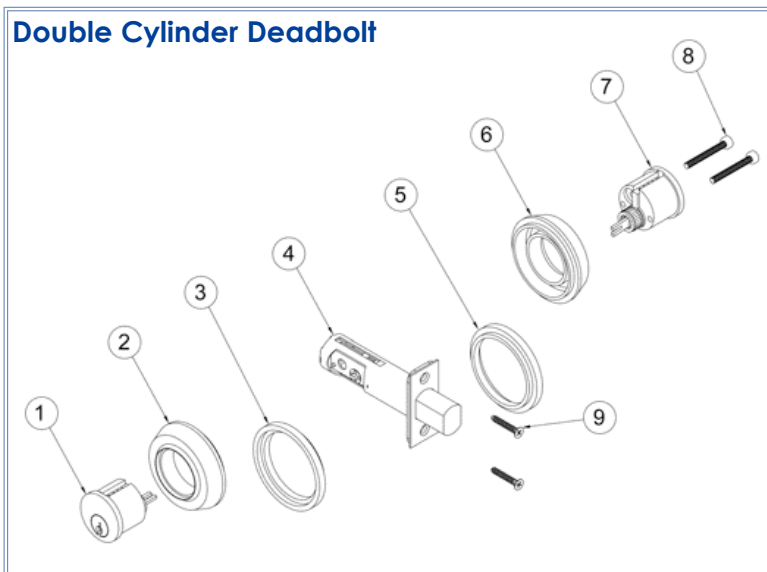
Door Prep Specifications:

- Fits standard door prep-- $2\frac{1}{8}$ " face bore & 1" edge bore.
- Fits a range of door thickness from $1\frac{3}{8}$ " to 2". Thicker doors--please specify.



Legend

- 1) Deadbolt Cylinder
- 2) Outside Rosette
- 3) Deadbolt Latch
- 4) Inside Rosette with Thumbturn
- 5) Socket Head Machine Screws
- 6) Deadbolt Ring (for Thinner Doors)
- 7) Latch Wood Screws



Legend

- 1) Outside Double Deadbolt Cylinder
- 2) Outside Rosette
- 3) Outside Deadbolt Ring (for Thinner Doors)
- 4) Deadbolt Latch
- 5) Inside Deadbolt Ring (for Thinner Doors)
- 6) Inside Rosette
- 7) Inside Double Deadbolt Cylinder
- 8) Socket Head Machine Screws
- 9) Latch Wood Screws

Latches:

Deadbolt:

- Hardened Steel Bolt
- $2\frac{3}{8}$ " backset standard
- $2\frac{3}{4}$ " backset available--please specify
- Heavy gauge steel understrike and brass trim strike supplied

Strike & Face Plates:

- Strike & faceplates are square cornered
- Strike Plate-- $1\frac{1}{8}$ "W x $2\frac{3}{4}$ "H
- Face Plate-- 1"W x $2\frac{1}{4}$ "H (attached to latch)
- Understrike Plate-- $1\frac{1}{8}$ "W x $2\frac{3}{4}$ "H
- See page 17 for detailed diagram

Leversets Specifications

Functions:

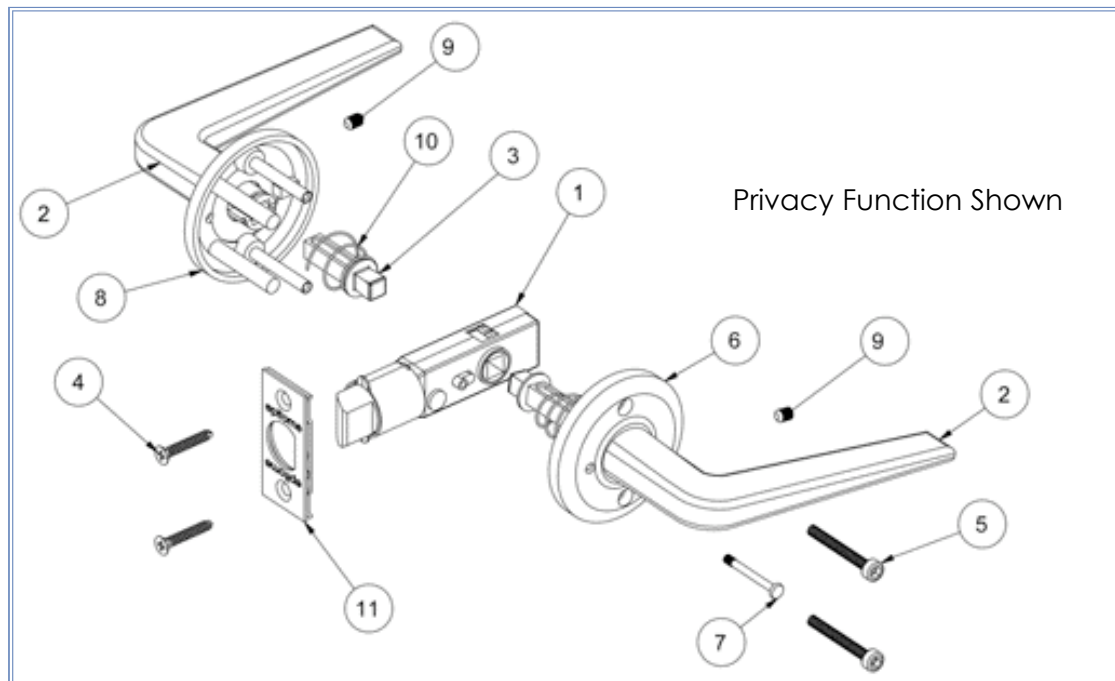
Passage: Lever operates from either side of door.

Privacy: Push button on the interior engages privacy. Turning the inside lever releases privacy and retracts latchbolt.

Dummy Pair: Surface mounted on threaded spindle. Requires no door prep.

Door Prep Specifications:

- Fits standard door prep-- $2\frac{1}{8}$ " face bore & 1" edge bore.
- Fits a range of door thickness from $1\frac{3}{8}$ " to 2". Thicker doors--please specify.



Latches:

- 28° retraction
- 7MM hub
- Split spindles
- $2\frac{3}{8}$ " backset standard
- $2\frac{3}{4}$ " backset available--please specify
- Stainless steel nosebolt

Strike & Face Plates:

- Strike Plate-- $1\frac{1}{2}$ "W x $2\frac{1}{4}$ "H
- Face Plate--1"W x $2\frac{1}{4}$ "H
- Full Lip strike is standard
- "T" strike optional--please specify
- Strike & faceplates are square cornered
- See page 18 for detailed diagram

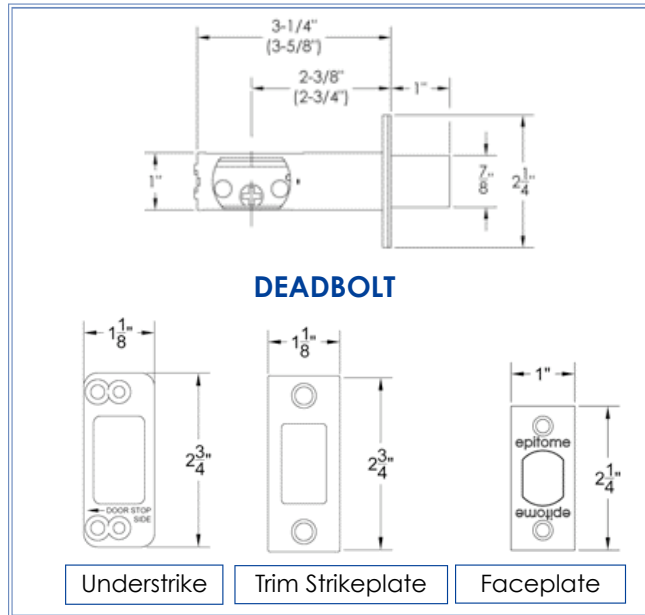
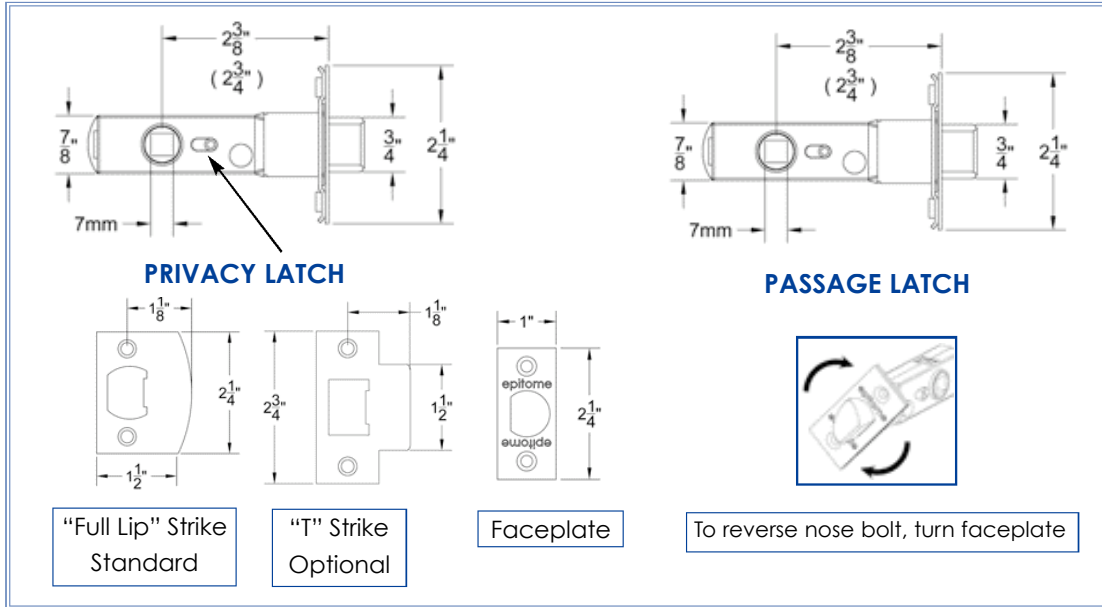
Legend

- 1) Latch (Passage/Privacy)
- 2) Lever Handles
- 3) Spindles
- 4) Face Plate Wood Screws
- 5) Socket Hex Head Machine Screws
- 6) Inside Rosette
- 7) Privacy Pin (for Privacy Sets)
- 8) Outside Rosette
- 9) Set Screws
- 10) Spindle Spring
- 11) Latch Face Plate

EMTEK PRODUCTS INC.

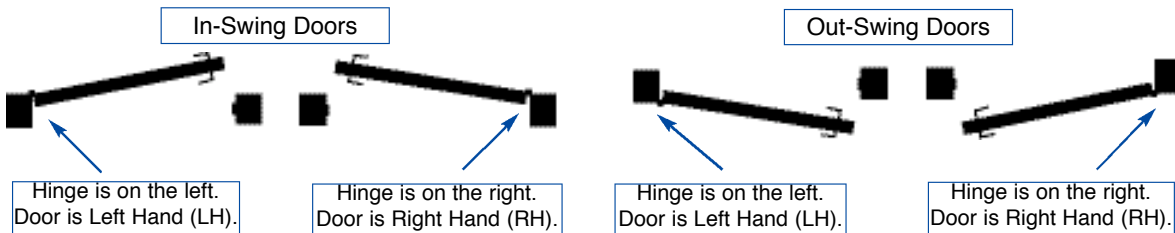
Phone No: (800) 356-2741 • (800) 428-4889 • (626) 961-0413 Fax No: (800) 577-5771 • (626) 336-2812

Latches & Strikes Specifications



Handing

HAND OF DOOR IS ALWAYS DETERMINED FROM THE OUTSIDE



TERMS AND CONDITIONS OF SALE

Terms:

Net 30 Days on established credit.

Freight:

EMTEK pays the freight on all shipments via three day service.

Returned Goods:

Merchandise may be returned only with prior approval from the factory.

A factory issued RGA number must accompany all returns. All returns must be sent freight prepaid.

Returned goods are subject to a 25% handling charge.

Minimum Order:

There is no minimum order quantity. A \$10.00 handling charge will be added to orders valued at less than \$50.00 net.

Prices:

Prices are subject to change without prior notice.

LIMITED WARRANTY

EMTEK Products Inc. (the "Company") warrants to the original purchaser that the products manufactured by it (the "Products") are free of defects in material and workmanship, provided:

1. the Company has been notified within **five years** of purchase date and been given the opportunity of inspection by return of any alleged defective Products to the Company, free and clear of all liens and encumbrances, transportation prepaid, accompanied by a statement of defects and proof of purchase; and
2. the Product has not been modified, abused, misused or improperly installed, maintained and/or repaired during such period.

The Company shall, at its option, either repair or replace, free of charge, any Products or part thereof found upon the Company's inspection, to be so defective, or at the Company's sole discretion refund the purchase price, less a reasonable allowance for depreciation, in exchange for the Product.

The Company makes no other warranty, and all implied warranties including any warranty of merchantability or fitness for a particular purpose are limited to the duration of the expressed warranty period as set forth above.

The Company's maximum liability hereunder is limited to the purchase price of the product. In no event shall the Company be liable for any consequential, indirect, incidental or special damages of any nature arising from the sale or use of the product, whether in contract, tort, strict liability or otherwise.

Notes:

A. Some states do not allow limitations on incidental consequential damages or how long an implied warranty lasts so that the above limitations may not fully apply.

B. This warranty gives specific legal rights and a buyer may also have other rights which may vary from state to state.

C. For warranty service and shipping instructions contact EMTEK Products Inc. at:
15250 E. Stafford Street, City of Industry, CA 91744

EMTEK PRODUCTS INC.

Phone No: (800) 356-2741 • (800) 428-4889 • (626) 961-0413 Fax No: (800) 577-5771 • (626) 336-2812

EMTEK PRODUCTS INC.

15250 E. Stafford Street
City of Industry, California 91744

Tel: 800-356-2741 • 800-428-4889 • 626-961-0413

Fax: 800-577-5771 • 626-336-2812

www.emtek.com

ASSA ABLOY is the global leader in door opening solutions, dedicated to satisfying end-user needs for security, safety and convenience.

An ASSA ABLOY Group brand

ASSA ABLOY